

Right Spin/Left Spin

Dr. Robert Cass
excerpt from Academy Sessions "pre-screening techniques"

(If we look at a human cell it's a liquid crystal structure not a fixed crystal. It's a semi conductor, not a conductor. It doesn't allow everything to pass through. If we think about the lipid bilayer the conductive capabilities and it being a liquid crystal there's something else that comes to mind, another man made structure - a computer chip. Human cells and a computer chip are identical in certain ways, they are both liquid crystal semi conductors. The big difference is that the human cell has its own rechargeable electrical source - the sodium potassium pump)

As you know, there really isn't much available on the subject of right spin/left spin as it tends to be part of the unclaimed area between chemistry and physics. However, the field of BioEnergetic Science provides us with a powerful aperture of understanding and application. While EAV/EDS has clinically championed this subject, the principles can easily be applied to other modalities of bio-energetic testing as it provides insight and solves the problems of:

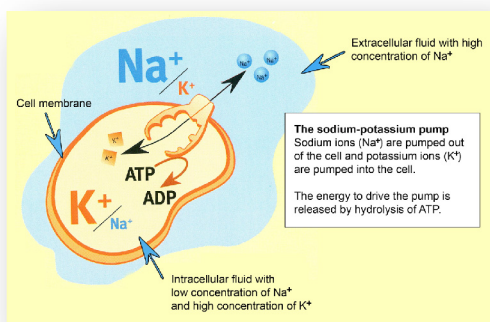
- patient plateauing
- accurate and sufficient drainage and detoxification
- ability to accept nutrition
- causal chain development
- uncovering "cloaked disturbances" etc.

It all begins with the hypothalamus stimulating the cell wall gradient to allow nutrients to enter the cell and buffered, waste materials to discharge.

If toxic cells are living in a congested and compromised, toxic ECM (extracellular matrix), attempts at drainage and detoxification will only compound the situation as I'm sure you can appreciate. While homeopathic, botanical and nutritional approaches may seem to help for the moment (often seen as an aggravation and amelioration of symptoms) this may be short-lived or reflected in and as, other conditions, due to the translocation and re-absorption of core xenobiotics at other levels. Simultaneously, if the cells are limited in their ability to receive adequate nutrition these additional limitations create a toxic soup which sabotages "healing for the pattern of life".

We know that potassium is principally found within cellular fluids and its counterpart, sodium, is mostly found within the extracellular fluids. The segregation of these two ions occurs by means of an adenosine triphosphate (ATP) driven "pump" (the famous sodium/potassium pump).

The pump consists of two proteins within the cellular membrane which, upon the trigger of energy release from ATP, transports three sodium molecules to the outside of the cell membrane, while simultaneously bringing in two potassium molecules. The transport created by this pump generates both an electrical and chemical gradient across the plasma membrane. Activation of ion channels changes the permeability of the cell membrane of both potassium and sodium. These changes generate electrical signals changing the amount of charge on the cell membrane; thus, changing the membrane potential which allows osmotic transfer via the "pump" (nutrition in-waste out).



Cells are an engine - a liquid, crystal engine. If the cell is generative it will emit a healthy field.

If the ECM is generative, it too will emit a healthy field. The photons within this collective field will be "in right spin", as we say.

Since potassium is an essential constituent of the blood buffering system it ionically assists in reducing the acidity of the system. If the balance is incorrect you end up with increasing acidity in the cells. Acidity at this level = cellular and ECM (extracellular matrix) congestion and toxicity.

What this all is pointing to is this: nutrition is transported into the cell and toxins are escorted out - a perfect mechanism if the polarity is stabilized. Dr. Voll spoke about his work in terms of "reactivating the mesenchyme" meaning that if the mesenchyme is loaded and congested with xenobiotics it will be physically and vibrationally

(as in oscillations) sluggish and will compromise the sodium/potassium pump amongst other things.

So now, let's look briefly at the nature of polarized light as this opens the way into a discussion of right and left spin.

In physics, there is a phenomenon known as "optical rotation" which comes from the helical structure of crystalline solids or helical molecules in liquids or solutions (sodium/potassium as an example). Spin is designated either right or left (dextro or laevo).

Light is a form of electromagnetic radiation, just like radio waves, television waves, radar, microwaves, infrared waves, X-rays, and Gamma rays. A distinctive feature of electromagnetic radiation is that the velocity is always the same. Light, travels at the speed of light, which in a vacuum, is around 186,000 miles per second or 299,792,458 meters per second.

Another characteristic of light is that it can be viewed in discrete units. These units are actually bundles of energy which we call photons. A stream of water looks like a solid entity and I suppose in many ways it is. However a stream is a unified collection of water molecules (H₂O) moving down the river representing the whole aka the stream. Just like the stream of water, a beam of light, is actually a collection of photons of light moving along ... at the speed of light!

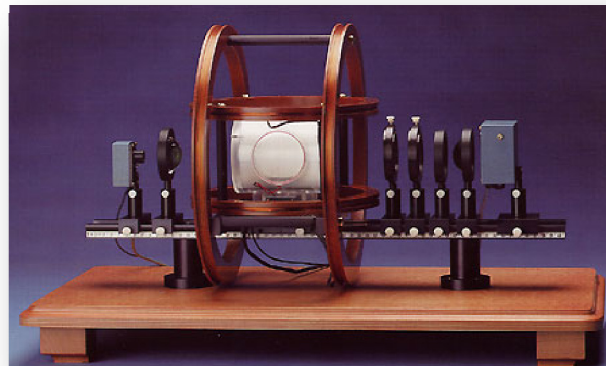
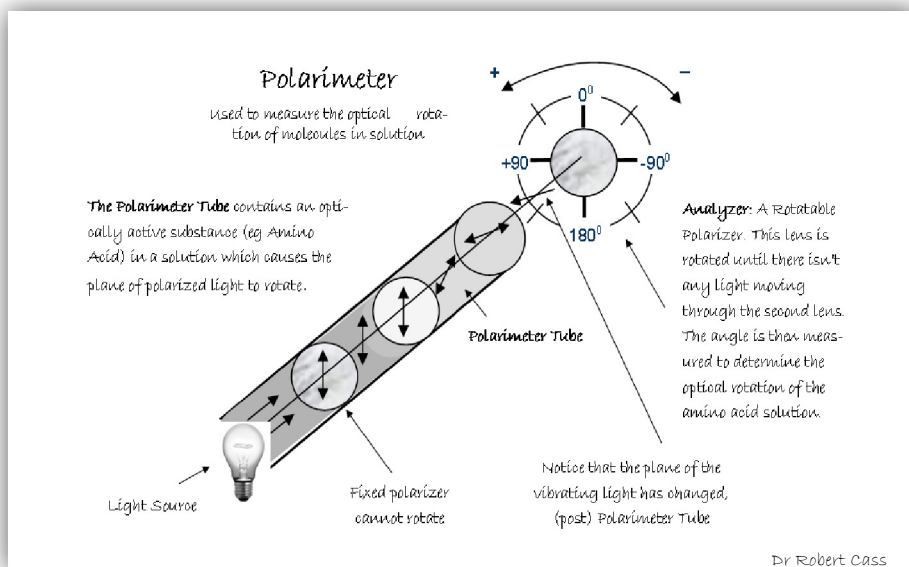
Light, like all electromagnetic radiation, exhibits the properties of wavelength and frequency. We know that light acts like a wave. So, for simplicity sake, let's describe this wave as a force that makes photons vibrate sideways. Looking at the picture, we see what looks like a wave. A photon of light is traveling from left to right. (Now remember, we are keeping things simple) as light goes from left to right it actually follows the wavy line that goes up and down as it goes toward the right or the left. Here we can see the photon of light vibrating up and down as it goes toward the right or to the left.

Each photon at one level acts independently from the other photons. So we could have some photons vibrate up and down, others vibrate in other directions. That is exactly what happens. Each photon vibrates in its own plane, or its own direction. However over time, the accumulated "vibration" of the photon will tend to establish a foundational direction, dominantly right or left.

To understand this better let's use this example. Scientists use a Polarimeter to detect stereoisomers. Stereoisomers, the left (L) and right (D) handed forms of amino acids, have essentially the same structures. If you look at the picture you can see in this example, that the polarimeter tube contains a solution of a stereoisomer substance such as an amino acid.

Once the light goes through the first polarizer lens (just like a Polaroid lens) only the light that vibrates up and down gets through. Now the light enters the tube that is filled with the amino acid. When it goes through the solution, the light begins to twist. The plane of light changes so that after the light comes out of the tube, it is now vibrating in another direction, not up and down, but a different direction.

It is the job of the second polarizer lens to determine how much the light has twisted or rotated. This second polarizer is rotated by the scientist until the light disappears. Then the angle is noted and recorded. So a polarimeter actually measures how much the light has been rotated by a specific substance.



This is what we are seeking to bioenergetically determine through our pre-screening tests utilizing the same principles as applied by the polarimeter.

Cells are an engine - a liquid, crystal engine. If the cell is generative it will emit a healthy field. If the ECM is generative, it too will emit a healthy field. The photons within this collective field will be "in right spin", as we say.

EAV, measures in part, "textures" of the mesenchyme using the electrical currents moving through the meridian pathways as a reference. Practitioners have determined that by measuring the electrical signals generated by cells by way of their meridian representation, healthy cells rotate "(photon) right". This confirms that the polarities are in balance and the cells are receiving nutrition (glucose, amino acids etc) and are excreting the now buffered, waste materials.

Unhealthy cells rotate "(photon) left" indicating limited nutrition is entering into the cells and a limited buffered or alkalinizing waste material is being excreted. The accumulative effect results in congested, toxic cells and ECM.

Remember that wise saying? "We are born alkaline, we perish acid"!

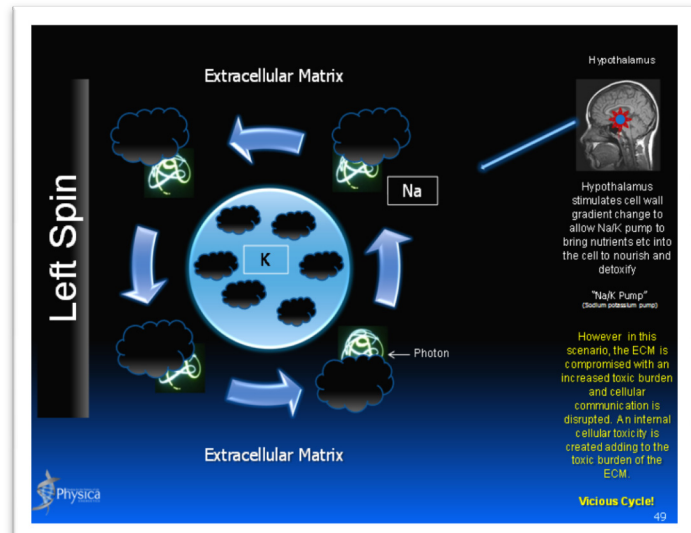
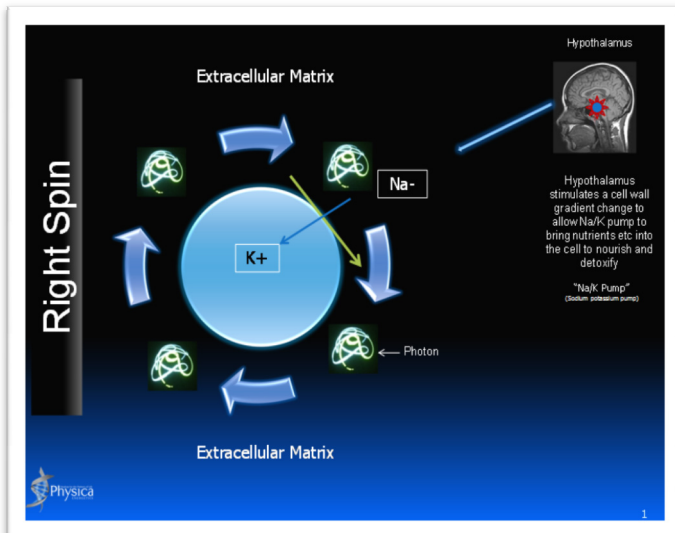
In order to correct for testing and medicament (remedy) purposes, the polarity of cellular interchange must be re-established. Failure to do so results in compromised cellular communication (the body's ability to detoxify and be nourished etc) auto-intoxication and/or unhealthy aggravation, all leading to false readings (EAV, muscle testing, etc.) and consequently, an unsuccessful outcome.

Right Spinning Filters Include

- SpectraLyte
- Rehydrate
- Metabolic-Tox
- Hypothal Code
- Flora Syntropy
- All ethno Botanical Spagyric Intrinsic

To re-establish correct spin (photon right spin) specific filters are introduced into the testing procedures and protocols to isolate causative factors such as geopathic stress, pH, hypothalamic imbalance, hydration, ionic trace minerals, electrolytes, etc.

So, I trust this gives you a more in-depth understanding of this subject beyond just the question, "is this patient testible or switched?". Use this pre-screening test every visit and your results will be commensurate.



Articles and references for further study.

The Extracellular Matrix and Ground Regulation: Basis for a Holistic Biological Medicine. Alfred Pischinger ISBN: 978-1-55643-688-8 (1-55643-688-2) Oschman, J. L. (2000). Energy medicine: The scientific basis of bioenergy therapies.. New York: Harcourt.
 Oschman, J. L., & Oschman, N. H. (1994). Biological coherence and response to external stimuli. Dover, NH: NORA
 Becker, R.O. (1990). Cross-Currents: The Perils of Electropollution – The Promise of Electromedicine. Los Angeles, CA: JP Tarcher
 Cohen S, Popp FA. Biophoton emission of the human body. J Photochem Photobiol B. 1997;40(2):187-189.
 Energy Medicine: The Scientific basis James Oschman ISBN 0-443-06261-7